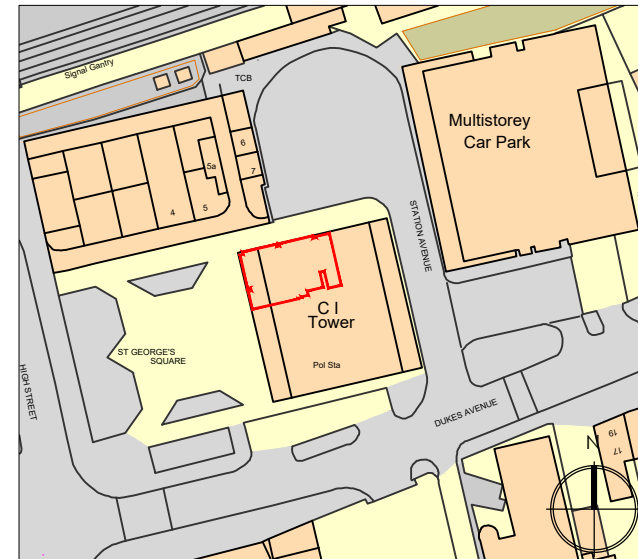
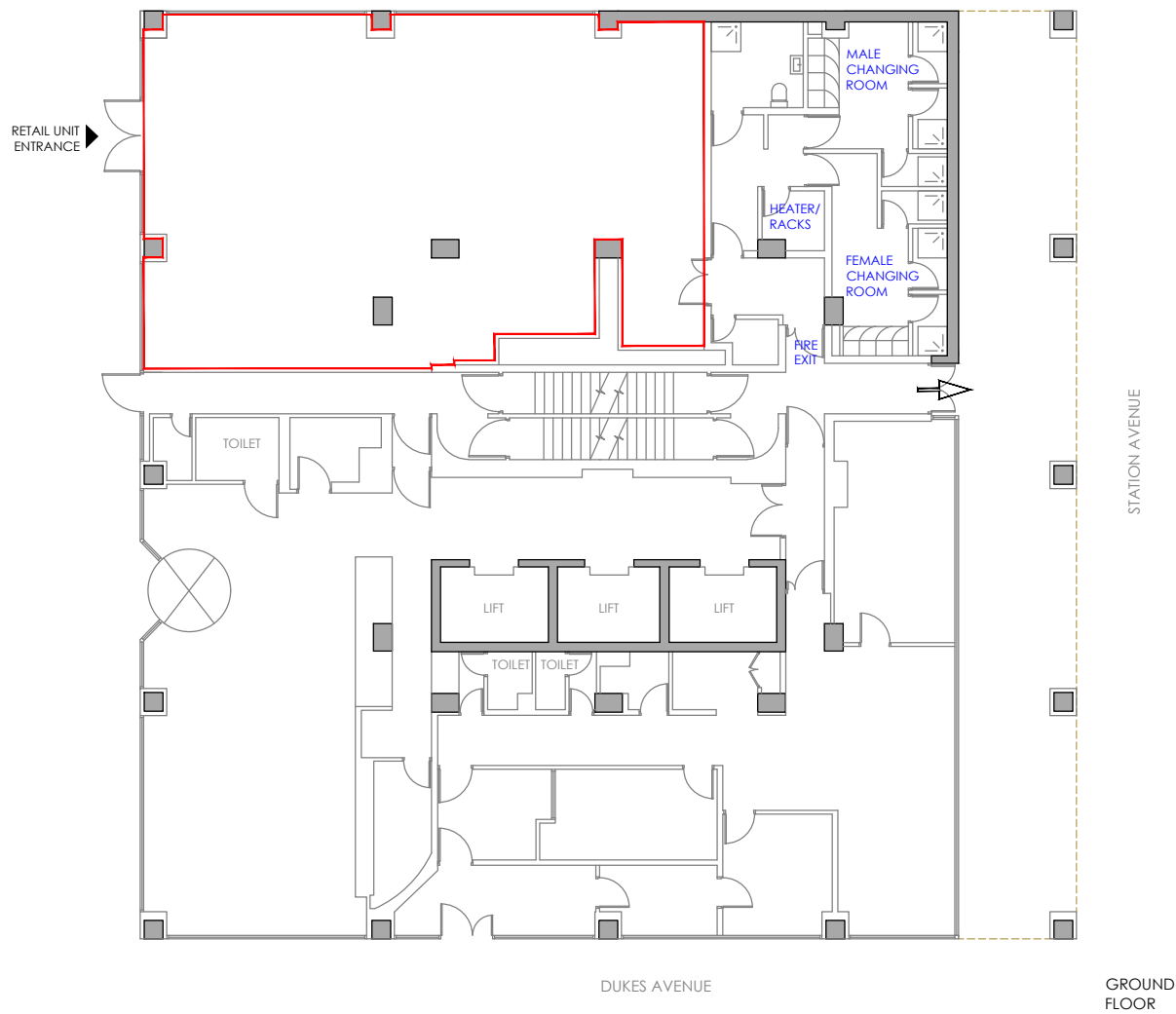
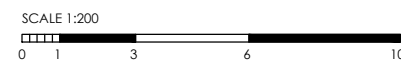


PLEASE NOTE, THIS IS AN A4 PLAN, IT SHOULD NOT BE ENLARGED OR SHRUNK TO FIT, WHEN PRINTING SET THE SCALE TO 'NONE'



LOCATION PLAN SCALE 1:1250



drawing address C1 TOWER ST GEORGES SQUARE NEW MALDEN KT3 4TE	location/details GROUND FLOOR RETAIL UNIT LEASE PLAN	date 23/02/21	scale 1/200
		dwg. no. PP6508-31b	sheet A4

